

# **NOW**

## **USER MANUAL**

### **FOR WEB CLIENT**

Version 1.0



**DotEx International Limited**

'Exchange Plaza', C-1, Block G,  
Bandra Kurla Complex, Bandra (East),  
Mumbai – 51, Maharashtra.

E-mail support – [now@nse.co.in](mailto:now@nse.co.in)

Website – [www.nowonline.in](http://www.nowonline.in)

Contact number – 1800 22 00 52 (Toll free)

## Table of Content

1	Introduction to NOW .....	3
2	Login.....	3
3	Change Password .....	4
4	User Profile .....	4
5	Express / Streamer .....	5
6	Create market watch.....	6
7	Market Watch.....	6
8	Get Quote .....	7
9	Market Picture (MBP) .....	8
10	Security Info .....	8
11	Intra Day Charts .....	9
12	Buy / Sell Order Entry .....	10
13	Order Book.....	12
14	Order History .....	12
15	Cancelled Order .....	13
16	Rejected order.....	13
17	Trade Book.....	13
18	Trade History.....	13
19	After Market Buy/Sell Order (AMO).....	14
20	Futures & Option .....	14
21	TOP N .....	17
22	Live News.....	17
23	Ticker .....	17
24	Alerts and Triggers Module .....	18
25	Get Log Messages .....	19
26	Online Reports .....	19
27	Fund Transfer.....	21
28	SSL Certificate .....	22
29	Logout .....	22



## **Copyright**

The information contained herein may not be copied, retransmitted, disseminated, distributed, sold, resold, leased, rented, licensed, sublicensed, altered, modified, adapted, or stored for subsequent use for any such purpose, in whole or in part, in any form or manner or by any means whatsoever, to or for any person or entity, including the purchaser, without DotEx International Ltd. express prior written consent.

## 1 Introduction to NOW

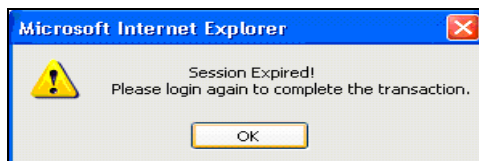
- NOW is a browser based trading interface. It allows you to trade online by logging in to [www.nowonline.in](http://www.nowonline.in).
- It provides you safe, secure and reliable trading platform.
- It aims at maximizing your trading convenience and real time access to market data.

## 2 Login

- Login to – [www.nowonline.in](http://www.nowonline.in)
- Enter member id, user id and password as provided by your empanelled member.
- System prompts you to change the password on first time login. We recommend you to change both login and transaction password.
- As a safety feature NOW provides you with multi level security check.
  - **Login password** allows you to login to the website.
  - **Transaction Password** authenticates for placing orders.
- Once you login to website you can view your account id as well as member id.

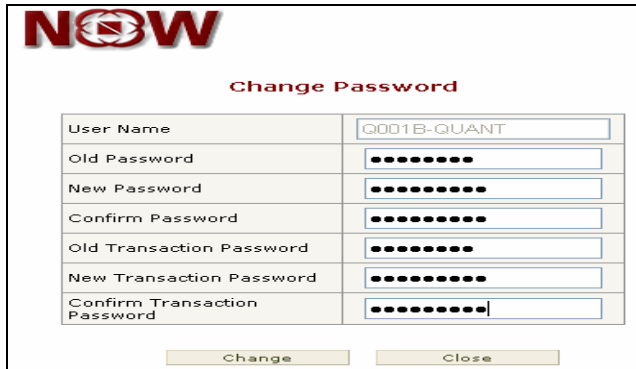


- Once you have logged in to NOW and you keep NOW website idle or don't perform any activity for 15 minutes then website gets automatically logged out. Click on 'Login again' to re-login to NOW by entering your member id, user id and password.



### 3 Change Password

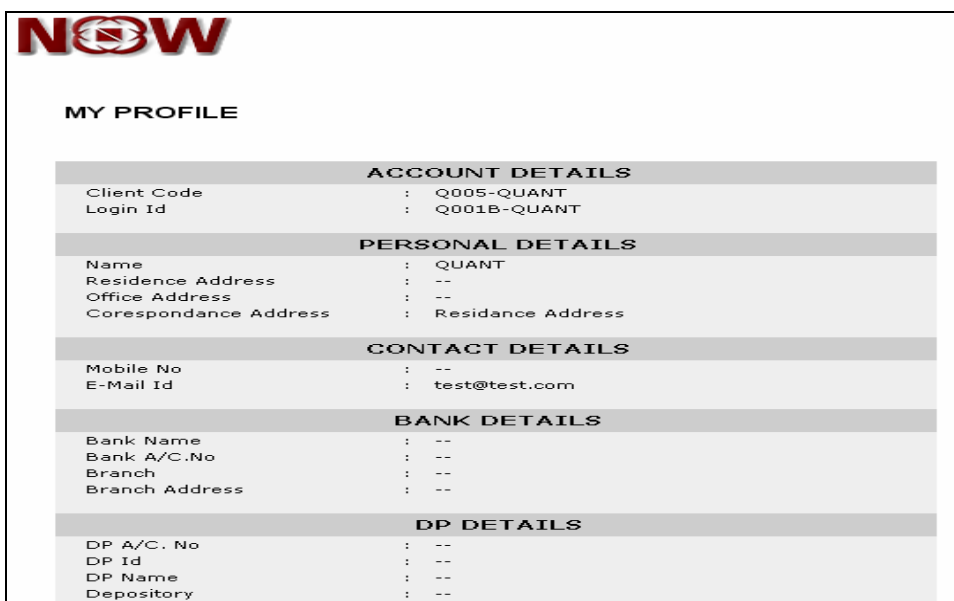
- Go to 'Account' and click on 'Change password'.
- You need to change the login password and transaction password after every 14 days.
- Once 14 day is completed, the system prompts for change password. Only after changing the password you will be allowed to login.
- The system does not allow setting of previously entered passwords. The system keeps a track of three password history.



Change Password	
User Name	Q001B-QUANT
Old Password	.....
New Password	.....
Confirm Password	.....
Old Transaction Password	.....
New Transaction Password	.....
Confirm Transaction Password	.....
<div>Change Close</div>	

### 4 User Profile

- User profile enables you to view your detailed information:
  - Account detail
  - Personal detail
  - Contact detail
  - Bank detail
  - DP detail
- Go to 'Account' and click on 'User Profile'.



MY PROFILE	
<b>ACCOUNT DETAILS</b>	
Client Code	: Q005-QUANT
Login Id	: Q001B-QUANT
<b>PERSONAL DETAILS</b>	
Name	: QUANT
Residence Address	: --
Office Address	: --
Correspondance Address	: Residence Address
<b>CONTACT DETAILS</b>	
Mobile No	: --
E-Mail Id	: test@test.com
<b>BANK DETAILS</b>	
Bank Name	: --
Bank A/C.No	: --
Branch	: --
Branch Address	: --
<b>DP DETAILS</b>	
DP A/C. No	: --
DP Id	: --
DP Name	: --
Depository	: --

## 5 Express / Streamer

- Express or steamer is a special feature for getting real time market quotes.
- The key features of express or steamer are as follows:
  - Get streaming quotes.
  - Easy accessibility for e.g. use short keys '+' or 'F1', '-' or 'F2' for buy and sell orders, etc.
  - Configure your market watch display.
  - Sort field in order book and trade book in ascending & descending order.
- Good internet bandwidth will enable you to use steamer proficiently.

Account Id : TT11    MarketWatch athul    Options Buy Order (F1,+)    Market NSE    Status Not Available

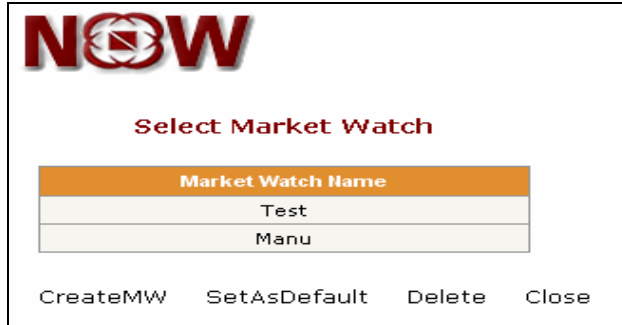
WELCOME TT11    NIFTY : 4893.2 (-53.35)    ExchangeTime : Tue May 27 01:15:24 IST 2008

Add Scrip	Pay In	Pay Out	Transfer Status	Limits	Holding	Settings	Refresh	Logout	Log	<input checked="" type="checkbox"/> Log Popup
ScripName	TradeSymbol	Exchange	BuyQty	BuyRate	SellRate	SellQty	LTRate	LTQty	LTTime	
ABAN OFFSHORE L ABAN-EQ	NSE	5	3949.00	3949.50	4	3949.35	10	12:44:49 PM		
ABB LTD.-EQ ABB-EQ	NSE	7	990.20	991.00	1	991.00	100	12:44:42 PM		
NIFTY-49654 NIFTYMAYFUT	NFO	350	4886.25	4887.00	7900	4887.00	50	12:44:55 PM		
ITC LTD.-EQ ITC-EQ	NSE	787	204.15	204.20	105	204.20	25	12:44:34 PM		
RELIANCE COMMURCOM-EQ	NSE	253	550.00	550.25	1	550.00	1	12:44:49 PM		
RELIANCE PETROL RPL-EQ	NSE	549	181.05	181.10	200	181.05	49	12:44:50 PM		
RELIANCE POWER IPOWER-EQ	NSE	187	433.00	433.25	54	433.25	30	12:44:50 PM		
TITAN-54360 TITANMAYFUT	NFO	206	1178.30	1182.60	206	1180.00	206	12:40:20 PM		
WIPRO LTD.-EQ WIPRO-EQ	NSE	52	482.10	482.30	250	482.30	41	12:44:40 PM		
RELIANCE GOLD ETREL GOLD-EQ	NSE	1	1266.11	1267.89	1	1266.10	5	12:41:07 PM		
RELIANCE INDUSTRIAL-EQ	NSE	1	1292.45	1293.00	61	1293.00	4	12:44:41 PM		
RELIANCE INDUSTRIAL-EQ	NSE	9	2546.50	2547.00	670	2547.00	1	12:44:55 PM		
RELIANCE INFRASTRUCTURE-EQ	NSE	30	1243.20	1243.70	49	1243.70	1	12:44:47 PM		
3I INFOTECH LTD.-3IINFOTECH-EQ	NSE	98	122.25	122.40	200	122.25	1	12:44:47 PM		
AARTI DRUGS LTD. AARTIDRUGS-EQ	NSE	152	49.40	49.90	7	49.95	40	12:41:27 PM		
3M INDIA LIMITED-3MININDIA-EQ	NSE	25	1875.00	1902.00	1	1870.00	49	10:54:22 AM		
ABBOTT INDIA LTD BOOTSPHARM-EQ	NSE					268.55				

Ord/Trd    Session

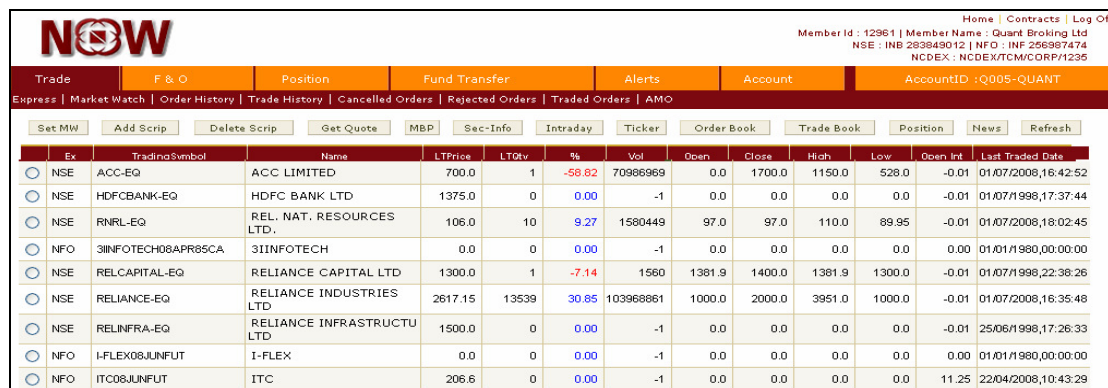
## 6 Create market watch

- Create your multiple market watch based on:
  - Asset class
  - Industry
  - Products
- Go to 'Trade' and click on 'Set MW' to create market watch.
- You can set desired market watch as a default market watch screen.



## 7 Market Watch

- Go to 'Trade' and click on 'Market Watch' or directly click on 'Market watch' icon on homepage to view the market watch.
- A Security to market watch is added by clicking on 'Add Scrip' button.
- Following features is viewable by selecting the securities from market watch:
  - Get Quote
  - MBP (Market by Price)
  - Sec-info (Security details)
  - Intraday
- Click on the scrip to place buy / sell order.
- After placing the order, the status of the order is displayed in the log message window.
- Click 'Refresh' button for updating various fields like high, low, last traded, last traded quantity, open interest.



Ex	Trading Symbol	Name	LTPrice	LTOlv	%	Vol	Open	Close	High	Low	Open Int	Last Traded Date
NSE	ACC-EQ	ACC LIMITED	700.0	1	-56.82	70986969	0.0	1700.0	1150.0	528.0	-0.01	01/07/2008,16:42:52
NSE	HDFCBANK-EQ	HDFC BANK LTD	1375.0	0	0.00	-1	0.0	0.0	0.0	0.0	-0.01	01/07/1998,17:37:44
NSE	RNRL-EQ	REL. NAT. RESOURCES LTD.	106.0	10	9.27	1580449	97.0	97.0	110.0	89.95	-0.01	01/07/2008,18:02:45
NFO	3IINFOTECH08APR85CA	3IINFOTECH	0.0	0	0.00	-1	0.0	0.0	0.0	0.0	0.00	01/01/1980,00:00:00
NSE	RELCAPITAL-EQ	RELIANCE CAPITAL LTD	1300.0	1	-7.14	1560	1381.9	1400.0	1381.9	1300.0	-0.01	01/07/1998,22:38:26
NSE	RELIANCE-EQ	RELIANCE INDUSTRIES LTD	2617.15	13539	30.85	103968861	1000.0	2000.0	3951.0	1000.0	-0.01	01/07/2008,16:35:48
NSE	RELINFRA-EQ	RELIANCE INFRASTRUCTURE LTD	1500.0	0	0.00	-1	0.0	0.0	0.0	0.0	-0.01	25/06/1998,17:26:33
NFO	I-FLEX08JUNFUT	I-FLEX	0.0	0	0.00	-1	0.0	0.0	0.0	0.0	0.00	01/01/1980,00:00:00
NFO	ITC08JUNFUT	ITC	206.6	0	0.00	-1	0.0	0.0	0.0	0.0	11.25	22/04/2008,10:43:29

## 8 Get Quote

- Go to 'Trade – Market watch' and click on 'Get Quote' or directly click on 'Get Quote' icon on homepage to view the get quote.
- The "Get Quote" feature enables you to fetch real-time price of securities.
- Select the exchange segment, series, company name and click on 'Go' button for getting the scrip quote.
- View following day's statistics:
  - Open,
  - High,
  - Low,
  - Last Trade Rate,
  - Cumulative Traded Volume,
  - % change
  - Best Buy rate
  - Best Sell rate
  - Refresh button enables you update the latest market information for that security.
  - Intraday button helps you to analyse the price movement and volume from time-to-time by placing the mouse pointer on the chart.

**NOW**

Detailed NSE Quote on : **ACC-EQ** at  
Last Traded Date : 01/07/2008,16:42:52

Symbol	ACC	Series	EQ
Best Buy 18000002@ (Rs)	600.00	Best Sell 148 @ (Rs)	700.00
LTPrice(Rs)	700.00	LastTradedQty	1
Previous close(Rs)	1700.00	Change(Rs)	-1000.00
% Change	-58.82%	High (Rs)	1150.00
Low(Rs)	528.00	CumTrade	70986969

Intraday

Refresh

Exchange Lookup

Exchange

Series/Settle

Search Text

GO

Symbol Lookup

Scrip Name

Symbol Name


GO

Close



## 9 Market Picture (MBP)

- The market picture displays the market by price of a security.
- This feature enables you to view the best five buy and sell price of selected security.



**NSE MBP / MARKET PICTURE for ACC LIMITED at 01/07/2008,16:42:52**  
**Last Traded Date : 01/07/2008,16:42:52**  
**Trading Symbol : ACC-EQ**

LastTradedPrice	700.00	LastTradedQty	1
% Change	-58.82	Abs. Change	-1000.00
Symbol	ACC	Series	EQ
No of Trades	0	WeightedAvg	719.61
OpenRate	0.00	Prev.CloseRate	1700.00
HighRate	1150.00	LowRate	528.00
Trend	-	Volume	70986969
TotalBuyQty	1800004	TotalSellQty	2328082

SL	Qty	Price(Rs)	Orders
1	1800002	600.00	1
2	1	597.40	1
3	1	522.40	1
4	0	0.00	0
5	0	0.00	0

SL	Qty	Price(Rs)	Orders
1	148	700.00	1
2	2213801	725.00	29
3	1	730.00	1
4	1	740.00	1
5	100001	750.00	2

**Exchange Lookup**

Exchange:

Series/Settle:

Search Text:


**Symbol Lookup**

Scrip Name:

Symbol Name:

## 10 Security Info

- Click on 'Trade – Market Watch – Sec Info'
- This function enables you to view the detail information of selected security like symbol, Lot Qty., Issue date, Expiry date, Ticker size, Issued capital etc.



**NSE SECURITY INFORMATION OF : ACC-EQ**

Symbol	ACC	Series	EQ
Board Lot Qty	1	Tick Size(Paise)	5
Instrument Type		Exchange	NSE
Listing Date	24 Oct 1994	Permitted To Trade	0
Issue Rate	0	Issued Capital[In Crs]	18.7642343
NoDelStartDate	NA	NoDelEndTime	NA
BookClsStartTime	12 Apr 2008	BookClsEndTime	24 Apr 2008
Record Date	NA	Local Update Date	26 Jun 2008
VWarning (%)	0.00	Freeze (%)	222.00
Credit Rating	-	ReAdmDate	NA
Expulsion Date	NA	IntPayDate	NA

**Exchange Lookup**

Exchange:

Series/Settle:

Search Text:

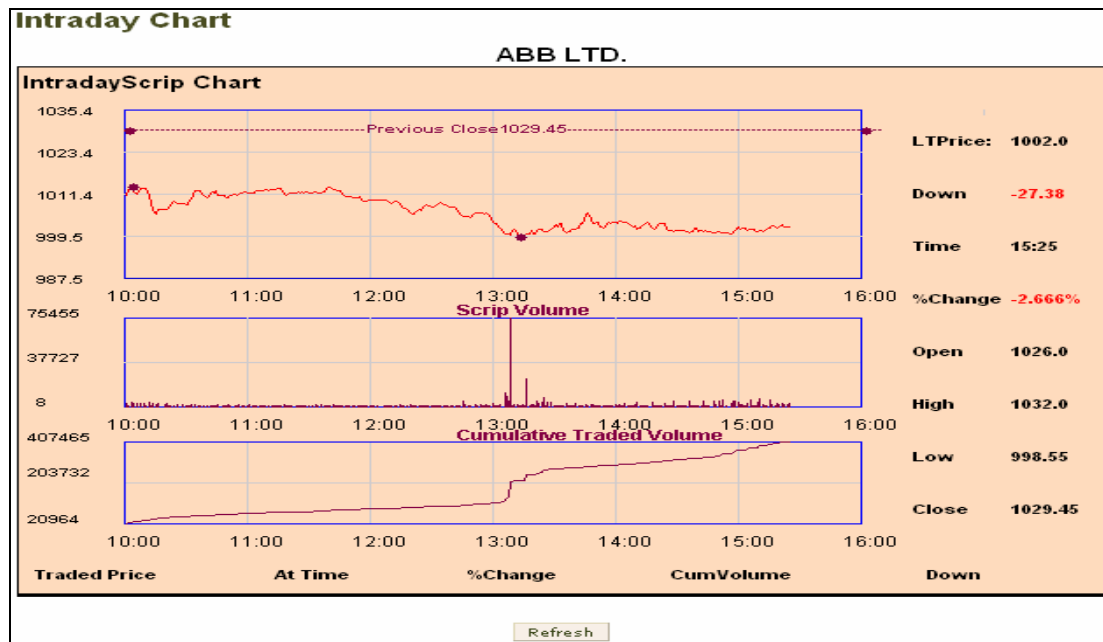
**Symbol Lookup**

Scrip Name:

Symbol Name:

## 11 Intra Day Charts

- Select the security for which you want to view the chart.
- Click on 'Trade – Market Watch – Intraday'
- The Intraday chart displays the price movement of selected security during trading hours.
- The chart displays 3 inter-related graphs:
  - Trade price
  - Scrip volume
  - Cumulative Traded Volume



## 12 Buy / Sell Order Entry

- Entering online orders with **NOW** is fast, convenient and secure.
- Order entry window is below the market watch screen.
- Place buy/sell order by selecting the security from the market watch and entering the following fields:
  - Product Code - Select the type of product you are assigned
    - Cash & carry (CNC)
    - Margin intraday square-off (MIS)
  - Buy/Sell
  - Price Type
    - Limit price (LIMIT)
    - Market price (MARKET)
    - Stop-loss limits (SL-L)
  - Retention
    - Day (valid till Day)
    - IOC (Immediate or cancel)
  - Qty- Enter the quantity of shares you want to buy or sell.
  - Disc Qty. – It is an optional field. Out of the total quantity ordered, you can enter the quantity that you desire to disclose. It has to be minimum 10% of the total quantity entered.
  - Price
  - Click on 'Submit' button to execute the order.
- Place buy / sell order without selecting security from market watch or if the security is not added to the market watch, as follows:
  - Exchange – Select the exchange from dropdown NSE for cash segment & NFO for futures & option segment,
  - Series/Settlement Type - EQ for cash segment, FUTIDX for futures index, FUTSTK for futures stock, OPTIDX for option index, OPTSTK for option stock.
  - Search text – Search for company name by entering minimum first 3 alphabets of desired company.
  - Company Name – Select the company name from drop down option.
  - Scrip Symbol – Select the scrip symbol from drop down option On selecting scrip symbol company name is picked up automatically
- Follow the same process as carried out for buy / sell selected security from market watch.

### Buy Order entry

Nifty: 4931.95 [-50.65] Click on "Refresh" button above to view lat

Exchange	Series/Settle	Search Text	Product Code	Buy / Sell	Price Type	Retention
NSE	EQ		CNC	BUY	LIMIT	DAY

Company Name	ScripCode / Symbol	Qty	Disc Qty	Price
ABB LTD.	ABB	5		1040

Submit Reset

## Sell order entry

Nifty: 4931.95 [-50.65]  \*\*Click on "Refresh" button above to view lat

Exchange	Series/Settle	Search Text	Product Code	Buy / Sell	Price Type	Retention
NSE	EQ		CNC	SELL	LIMIT	DAY
Company Name	ScripCode / Symbol		Qty	Disc Qty	Price	
ABB LTD.	ABB		5		1040	
						Submit Reset

- On submitting the order a confirmation of order is displayed on the screen. It shows important parameters of the order.

**PUT BUY ORDER**


AccountId	Q001B-QUANT
Exchange	NSE
Company Name	ACC LIMITED
Symbol	ACC
Series	EQ
Buy/Sell	BUY
Order Type	LIMIT
Product Code	MIS
Quantity	10
Disc Quantity	0
Price (Rs)	658
Trigger Price (Rs)	0
Valid Till	DAY
Transaction Password	*****

SUBMIT CLOSE

- All orders are passed through the Risk Management System to check the order and exposure parameters against the limits set by your member.
- Order is executed only after RMS validation.

### 13 Order Book

- Click on 'Trade – Market watch – Order book'.
- The order book lists current orders and their status.
- Order history of the selected security is viewed by clicking on order history.
- Order is cancelled or modified by selecting the desired security and clicking on 'Modify Order' and 'Cancel Order' respectively. However in case of modify order price and quantity field is modifiable.
- Order is filtered based on:
  - Buy / sell
  - Exchange
  - Type of order

 <b>order book</b>											
All Orders - NSE <input type="button" value="Modify Order"/> <input type="button" value="Cancel Order"/> <input type="button" value="Order History"/> <input type="button" value="Refresh"/> All <input type="button" value="NSE"/> All <input type="button" value="Go"/>											
	ExchangeSegment	NOWOrderNo	RequestId	Buy/Sell	Symbol	Price	Average Price	Total Qty	Pending Qty	Disclosed Qty	Fi
<input type="radio"/>	NSE	80701000000129	1	BUY	RNRL	100.00	0.00	8	8	0	
<input type="radio"/>	NSE	80701000000128	1	SELL	RELCAPITAL	1301.00	0.00	5	5	0	
<input type="radio"/>	NSE	80701000000127	1	SELL	HDFCBANK	1350.00	1375.00	5	0	0	
<input type="radio"/>	NSE	80701000000126	1	BUY	ACC	658.00	0.00	10	10	0	

### 14 Order History

- This feature allow you to view the historic order by:
  - Exchange
  - Date
  - Order number
  - Time
  - Scrip symbol.
- Following fields are viewable in the order book:
  - Security Code
  - Name
  - Order Id
  - Transaction Type
  - Settlement Type
  - Order type
  - Order price
  - Ordered Quantity
  - Executed Quantity
  - Pending Quantity
  - Retention Status along with the execution status.

## 15 Cancelled Order

- This function enables you to view all historic as well as current cancelled order.

## 16 Rejected order

- Orders which are rejected due to insufficient collateral limit or violation to RMS rules set by your member is listed under rejected order category.

## 17 Trade Book

- Trade book screen displays all executed trades during the trading day.
- You can transfer the trade from MIS to CNC or vice versa, subject to approval from your member. It can be initiated as follows:
  - Select the trade you like to convert the product type.
  - Selecting the product type from dropdown
  - Click on 'Position conversion' button.
- Order is filtered based on:
  - Product type
  - Exchange
  - Buy / sell

<b>NOW trade book</b>								
Trade Book - NSE								
PositionConversion		SELE	Order History		Refresh		All	NSE
								Go
	ExchangeSegment	NOWOrderNo	RequestId	Buy/Sell	Symbol Name	ExchangeOrderNo	Fill Time	Fill Price
	NSE	80701000000127	1	SELL	HDFCBANK	2008070100000227	01/07/2008,18:45:59	1375.00

## 18 Trade History

- This feature allow you to view the historic traded order by:
  - Exchange
  - Date
  - Order number
  - Time
  - Scrip symbol
- Following fields are viewable in the trade book:
  - Symbol Name
  - Trade Id
  - Security Code
  - Transaction Type (i.e. Buy/Sell)

- Market price
- Trade Quantity
- Amount
- Order Id
- Order Type (i.e. Trading / Delivery).

## 19 After Market Buy/Sell Order (AMO)

- AMO enables you to place orders after trading hours.
- Orders will be placed automatically in the next trading day. However AMO will be subject to your member's approval.

https://125.16.148.245 - AMO Market Watch - Microsoft Internet Explorer provided by NSEIL

Ex	Trading Symbol	Name	LTPrice	LTQty	%	Vol	Open	Close	High	Low	Open Int	Last Traded Date
NSE	ABAN-EQ	ABAN OFFSHORE LTD.	3854.25	5	-0.79	33876	3950.0	3885.1	3950.0	3825.0	-0.01	20/05/2008,10:26:
NSE	ABB-EQ	ABB LTD.	1059.3	3	-1.17	15397	1088.65	1071.85	1088.65	1055.1	-0.01	20/05/2008,10:25:
NFO	NIFTYMAYFUT	NIFTY	5115.55	50	-0.71	3095300	5111.7	5152.3	5132.9	5100.0	301203.00	20/05/2008,10:26:
NSE	ITC-EQ	ITC LTD	225.0	5	-0.92	359862	226.0	227.1	227.1	223.5	-0.01	20/05/2008,10:26:
NSE	RCOM-EQ	RELIANCE COMMUNICATIONS L	594.2	12	-1.38	880088	610.1	602.55	610.1	590.0	-0.01	20/05/2008,10:26:
NSE	RPL-EQ	RELIANCE PETROLEUM LTD.	185.7	100	-0.80	1546087	185.9	187.2	186.95	184.2	-0.01	20/05/2008,10:26:
NSE	RPOWER-EQ	RELIANCE POWER LTD.	423.8	297	1.42	758506	420.95	417.85	427.4	414.0	-0.01	20/05/2008,10:26:
NFO	TITANMAYFUT	TITAN	1256.2	206	0.20	16068	1256.75	1253.6	1264.9	1249.5	2820.14	20/05/2008,10:25:
NFO	0		-0.01	0	0.00	-1	0.0	0.0	0.0	0.0	-0.01	01/01/1970,05:30:
NSE	WIPRO-EQ	WIPRO LTD	495.0	49	-2.12	105327	500.0	505.75	504.9	492.35	-0.01	20/05/2008,10:26:
NSE	RELGOLD-EQ	RELIANCE GOLD ETF	1223.05	28	1.74	513	1210.0	1202.11	1228.0	1210.0	-0.01	20/05/2008,10:24:
NSE	RIL-EQ	RELIANCE INDUSTRIAL INFRA	1370.0	1	-2.99	34857	1395.0	1412.3	1410.0	1357.55	-0.01	20/05/2008,10:26:
NSE	RELIANCE-EQ	RELIANCE INDUSTRIES LTD	2613.3	10	-0.84	173953	2625.0	2635.7	2635.0	2605.0	-0.01	20/05/2008,10:26:
NSE	RELINFRA-EQ	RELIANCE INFRASTRUCTU LTD	1427.9	2	-2.39	154453	1449.0	1462.95	1451.0	1423.9	-0.01	20/05/2008,10:26:
NSE	3INFOTECH-EQ	3I INFOTECH LTD.	126.1	116	-1.44	26178	126.85	127.95	127.85	125.5	-0.01	20/05/2008,10:26:
NSE	AARTIDRUGS-EQ	AARTI DRUGS LTD.	51.85	50	1.46	906	51.1	51.1	52.0	51.1	-0.01	20/05/2008,10:24:

Nifty : 5125.05 [-32.65]

Exchange: NSE Series/Settle: EQ Search Text: >> Product Code: MIS Buy / Sell: BUY Price Type: LIMIT Retention: DAY

Company Name: 3M INDIA LIMITED ScripCode / Symbol: 3MINDIA Qty: Disc Qty: Price: Submit Reset

## 20 Futures & Option

- Placing buy sell derivative order from order entry window.
- Select the following fields:
  - Exchange – NFO
  - Instrument type
  - Symbol
  - Expiry date
  - Click on 'Spread/2L/3L' for spread orders. 2L and 3L refers to 2 level and 3 level spread order.


7: 0.0 [0.0]

Exchange: NFO Instr. Name: ----Select Symbol: Price Type: LIMIT Retention: DAY Spread/2L/3L

Product Code: MIS Buy / Sell: BUY Price: Qty: Disc Qty: Price: Submit Reset



- **Exercise-**
  - Exercise your options by clicking on 'F & O – Exercise'.
  - Select the following fields for placing an order
    - Exchange
    - Instrument type
    - Symbol
    - Expiry date
    - Option type
    - Strike price
    - Buy / Sell
    - Exercise or Don't exercise
    - Total quantity
  - Click on send button for placing the order.

**Exercise**

Exchange	Instrument Name	Symbol	Expiry Date	Option Type	Strike Price
NFO	OPTIDX	NIFTY	28 Aug, 1	CE	4650.0
B/S	Exercise	Demat	Warehouse	Total Qty	
B	Exercise	Yes		50	

- **Exercise Report** – This enables you to view entire index as well as option position request sent to the exchange.
- **Spread Order Report**- This enables you to view comprehensive report of spread orders that has been placed.


  

2L Orders

	NOWOrderNo	RequestId	Buy/Sell	Symbol	Company Name	Price	Average Price	Total Qty	Pending Qty	Disclosed Qty	Filled Qty	Trigger
	80528000011176	1	BUY	ABB08JUNFUT	ABB08JUNFUT	1000.00	1000.00	250	0	250	0	0



- **Option Calculator-** Option calculator is used for calculating theoretical value of option price.



**Options Calculator-Black Scholes Price Model**

<b>InstrumentName</b>	<b>Symbol</b>	<b>ExpiryDate</b>	<b>OptionType</b>	<b>StrikePrice</b>
OPTIDX	NIFTY	28 Aug, 2008	CE	4600.0

**SpotPrice**

☒ Premium    ☐ Volatility (%)

**InterestRate (%)**

Calculate

Clear All

Exit

**Input Values:**

Symbol	: NIFTY
Instrument Name	: OPTIDX
Strike Price	: 4600.0
Expiry Date	: 29/08/2008
Option Type	: CE
Spot Price	: 4000
Interest Rate %	: 10

**Output Values:**

Theoretical Option Price	: 7
Delta	: 0.055628
Gamma	: 0.000369
Theta / Day	: -0.3589
Vega	: 1.7742
Rho	: 0.3366

## 21 TOP N

- You can view top 10 securities by clicking on 'Top N' icon.
- View top 10 securities by selecting exchange as NSE for cash & NFO for derivative market.
- This feature enables you to keep track of the market statistics. Some important features includes:
  - Top n Gainers and Losers by % Change
  - Top n Gainers and Losers by absolute Change
  - Hourly Trade Statistics
  - Exchange Turnover



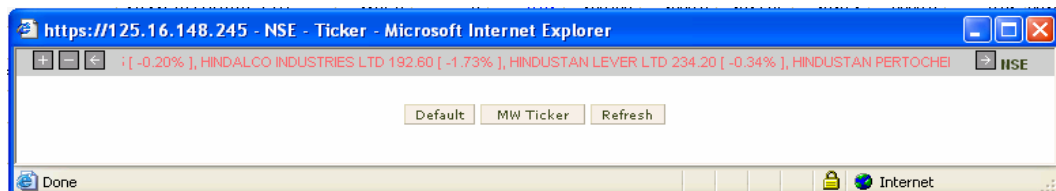
Top N	Category:	Basket:	Go	Refresh
Exchange	Symbol	Series	Company Name	Value
NSE	IFCI	EQ	IFCI LTD	1864675100.00
NSE	ISPATIND	EQ	ISPAT INDUSTRIES LIMITED	1458349500.00
NSE	RPL	EQ	RELIANCE PETROLEUM LTD.	931639300.00
NSE	CHAMBLFERT	EQ	CHAMBAL FERTILIZERS LTD	779152900.00
NSE	ESSAROIL	EQ	ESSAR OIL LTD	714749900.00
NSE	RNRL	EQ	REL. NAT. RESOURCES LTD.	690015600.00
NSE	NAGARFERT	EQ	NAGARJUNA FERT & CHEM LTD	599265600.00
NSE	JPASSOCIAT	EQ	JAIPRAKASH ASSOCIATES LTD	493353900.00
NSE	SAIL	EQ	STEEL AUTHORITY OF INDIA	487007300.00
NSE	PUNJLLOYD	EQ	PUNJ LLOYD LIMITED	438574500.00
NSE	RUBYMILLS	BE	THE RUBY MILLS LTD	100.00

## 22 Live News

- We keep you updated with latest market events.
- Get real-time news information and announcements from NSE.
- All the news headlines are scrolled continuously in the news information page.
- You can select the relevant news item to get detailed information about it.

## 23 Ticker

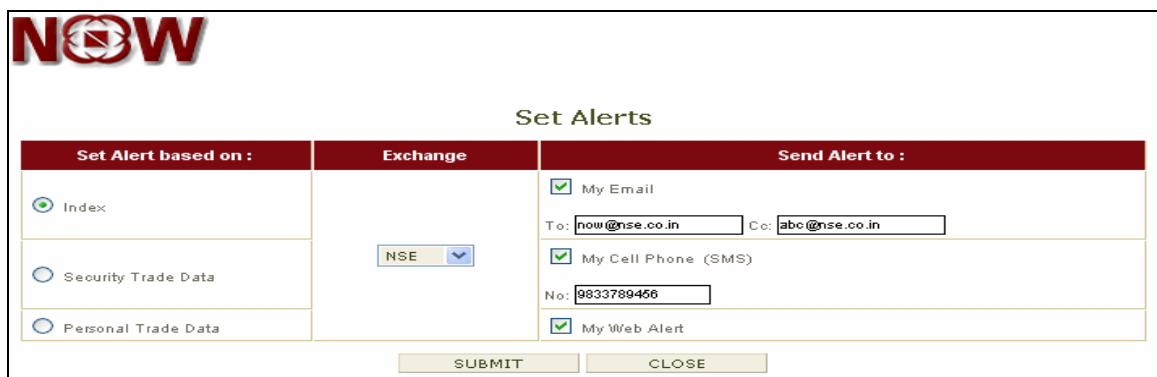
- The ticker window displays the prices of securities on a real time basis. You can customize the ticker to display only the securities you are interested in.
- Once you log in, the default ticker start displaying the latest information of the securities at the bottom of the page.
- NOW allows you to select one of your portfolios to be the default ticker.
- It also allows you to detach the ticker. Thus enabling you to keep track of your securities while carrying out any other task/activity.



## 24 Alerts and Triggers Module

With so much happening in the market in such a short time it is sometimes very difficult to keep track of all securities or events in the market. So to keep you informed about all the important events in your stocks we have a comprehensive alerts and triggers module in NOW. This module enables you to configure different alerts and triggers based on various parameters. NOW will then keep track of all parameters and intimate you whenever the alert is triggered. Specify where and how you would like to receive the alerts. Following are the configurable alerts and triggers:

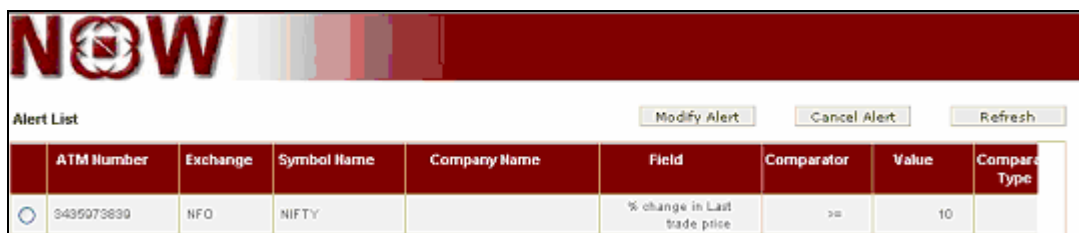
- Index based Alerts and Triggers – Set alert conditional to index values.
- Security based Alerts and Triggers – Set alert conditional to following security data
  - Last trade price
  - Cumulative traded volume
  - Weighted average price
  - Percentage change in price from previous close.
- For specific exchange
- You can set the mode of communication of alert through:
  - E-mail
  - SMS
  - Pop-up



**Set Alerts**

Set Alert based on :	Exchange	Send Alert to :
<input checked="" type="radio"/> Index	NSE	<input checked="" type="checkbox"/> My Email To: <input type="text" value="now@nse.co.in"/> Co: <input type="text" value="abc@nse.co.in"/>
<input type="radio"/> Security Trade Data		<input checked="" type="checkbox"/> My Cell Phone (SMS) No: <input type="text" value="9833789456"/>
<input type="radio"/> Personal Trade Data		<input checked="" type="checkbox"/> My Web Alert
<input type="button" value="SUBMIT"/> <input type="button" value="CLOSE"/>		

- **Alert History**
  - Modify or cancel the alert by clicking the 'Modify Alert' and 'Cancel Alert' button.
  - Once alert conditions are modified click on 'Refresh' button to update in the system.



Alert List								
	ATM Number	Exchange	Symbol Name	Company Name	Field	Comparator	Value	Compare Type
<input type="radio"/>	3435973639	NFO	NIFTY		% change in Last trade price	>=	10	

## 25 Get Log Messages

- View all activity log of order & trade by using this function.
- Click on 'Account – Get log message'

**HOW Log - TT11**

Unfilled size 0 Product :CNC Symbol :RPL-EQ PRICE :186.25 Duration : DAY is : "complete" Trigger Prc :0.0 Customer/Firm :C QTY :50 By :TT11  
 Exchange :nse\_cm Request ID : 1 Price Type :L Trans Type :B For Account : TT11NEST Order No : 80523000003871 with Filled Shares :50 Disc Qty :0  
 @ 23/05/2008,15:57:18

Unfilled size 5 Product :CNC Symbol :RPL-EQ PRICE :186.25 Duration : DAY is : "open" Trigger Prc :0.0 Customer/Firm :C QTY :50 By :TT11  
 Exchange :nse\_cm Request ID : 1 Price Type :L Trans Type :B NEST Order No : 80523000003871 with For Account : TT11 Filled Shares :45 Disc Qty :0  
 @ 23/05/2008,15:57:18

Unfilled size 50 Product :CNC Symbol :RPL-EQ PRICE :186.25 Duration : DAY is : "open" Trigger Prc :0.0 Customer/Firm :C QTY :50 By :TT11  
 Exchange :nse\_cm Request ID : 1 Price Type :L Trans Type :B For Account : TT11NEST Order No : 80523000003871 with Filled Shares :0 Disc Qty :0  
 @ 23/05/2008,15:57:18

Unfilled size 50 Product :CNC Symbol :RPL-EQ PRICE :186.25 Duration : DAY is : "open pending" Trigger Prc :0.0 Customer/Firm :C QTY :50 By :TT11  
 Exchange :nse\_cm Request ID : 1 Price Type :L Trans Type :B For Account : TT11NEST Order No : 80523000003871 with Filled Shares :0 Disc Qty :0  
 @ 23/05/2008,15:57:18

Unfilled size 50 Product :CNC Symbol :RPL-EQ PRICE :186.25 Duration : DAY is : "validation pending" Trigger Prc :0.0 Customer/Firm :C QTY :50 By :TT11  
 Exchange :nse\_cm Request ID : 1 Price Type :L Trans Type :B For Account : TT11NEST Order No : 80523000003871 with Filled Shares :0 Disc Qty :0  
 @ 23/05/2008,15:57:18

☐ Match Case

## 26 Online Reports

- **Net Position**
  - This feature provides you to view real-time positions & account balance.
  - Click on 'Position – Positions
  - Filter online report by selecting the following:
    - Day wise / Netwise
    - Type of product
    - Exchange



**Position Book - ALL**
DAYWISE
ALL
ALL

Trading Symbol	Company Name	Buy Qty	Avg. Buy Price	Buy Amt	Sell Qty	Avg. Sell Price	Sell Amt
ABB08JUNFUT	FUTSTK-ABB-26 Jun, 2008	250	100.00	25000.0	0	0.00	0.0
ABB08JULFUT	ABB08JULFUT	0	0.00	0.0	250	110.00	27500.0
HAVELLS-EQ	HAVELLS-EQ	100	100.00	10000.0	0	0.00	0.0

- **Limit**
  - View your risk management limit available for trade.
  - Click on 'Position – Limit'

NOW			
RMS WATCH			
ENTITY ID : TT11			
Cash Margin Avail	100000.00	Exposure Multiplier	1.00
Collateral Value	0.00	Sell Exposure	0.00
Adoc Margin	0.00	Buy Exposure	0.00
Margin Prsnt Percentage	0.00	Sell Exposure Multiplier	0.00
Amount Utilized Present	0.00	Buy Exposure Multiplier	0.00
Margin Used	0.00	Realized MTM Prsnt	0.00
Percentage Utilized	0.00	Unrealized MTM Prsnt	0.00
Margin Present Percentage		MTM Loss	0.00
Span Margin Present	0.00	MTM Mult	0.00
Premuim Present		Turnover Multiplier	0.00
Gross Exposure	0.00	Category	NEAT
Order Value Limit	0.00		
Order Qty Limit	0		

- **Holdings-**
  - This feature enables you to view all your holdings on real time basis.

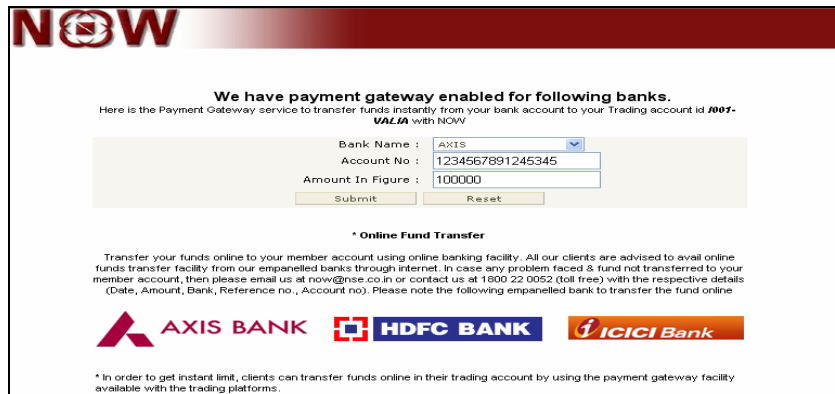
NOW									
Holdings									
Refresh									
Scrip Code	Series	Symbol	Client ID	Product Code	Collateral Type	Qty	BTST Qty	Used Qty	Price
--	EQ	ABB	TT11	CNC		0	20	0	0.00

- **T1 Holdings**
  - This feature enables you to view those securities which are yet to be delivered in your demat account on real time basis. In other words you can view those securities which are bought yesterday but will be transferred to your demat account on T+2 day.

NOW				
T1 Holdings				
Refresh				
Scrip Code	Series	Symbol	Client ID	Product Code
--	EQ	ABB	TT11	CNC

## 27 Fund Transfer

- Fund Pay-in
  - You can transfer fund from your bank account to member's bank account by using online payment facility.
  - Online payment can be initiated, if clients and member have bank a/c with the same bank and the bank is empanelled with Dotex International Ltd.
  - Once the funds are transferred to your member bank a/c, your collateral limit is updated on real time basis.
  - For fund transfer click on 'Fund Transfer – Pay-in'.
  - Select the respective bank from the dropdown provided in 'Bank Name'.
  - Enter your account number.
  - Enter amount to be transferred to member account.
  - Click on 'Submit' button
  - Note down your merchant reference number for the transaction.
  - The payment gateway of the respective bank will open.
  - Enter your username & password as provided by your respective bank.






**NOW**

**We have payment gateway enabled for following banks.**  
Here is the Payment Gateway service to transfer funds instantly from your bank account to your Trading account id #007-  
**VALIA** with NOW

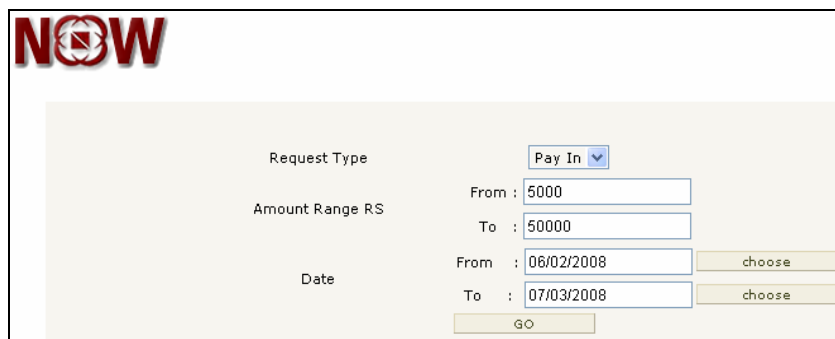
Bank Name :   
Account No :   
Amount In Figure :

**\* Online Fund Transfer**  
Transfer your funds online to your member account using online banking facility. All our clients are advised to avail online funds transfer facility from our empanelled banks through internet. In case any problem faced & fund not transferred to your member account, then please email us at now@nise.co.in or contact us at 1800 22 0052 (toll free) with the respective details (Date, Amount, Bank, Reference no., Account no). Please note the following empanelled bank to transfer the fund online

 **AXIS BANK**  **HDFC BANK**  **ICICI Bank**

\* In order to get instant limit, clients can transfer funds online in their trading account by using the payment gateway facility available with the trading platforms.

- Transfer Status
  - View detailed reports of all your fund transfers.
  - Select the range of amount & date for which you want to view the records.



**NOW**

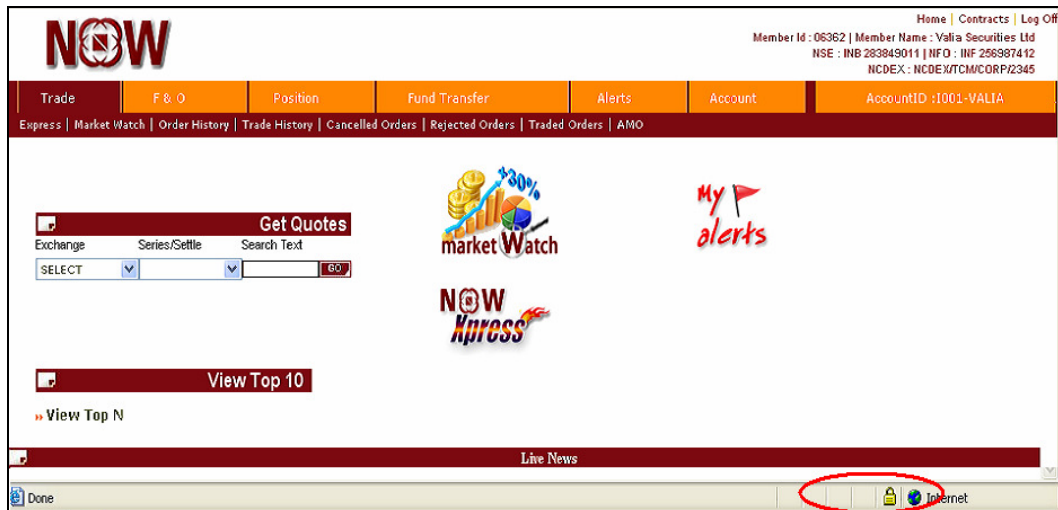
Request Type

Amount Range RS  
From :   
To :

Date  
From :    
To :

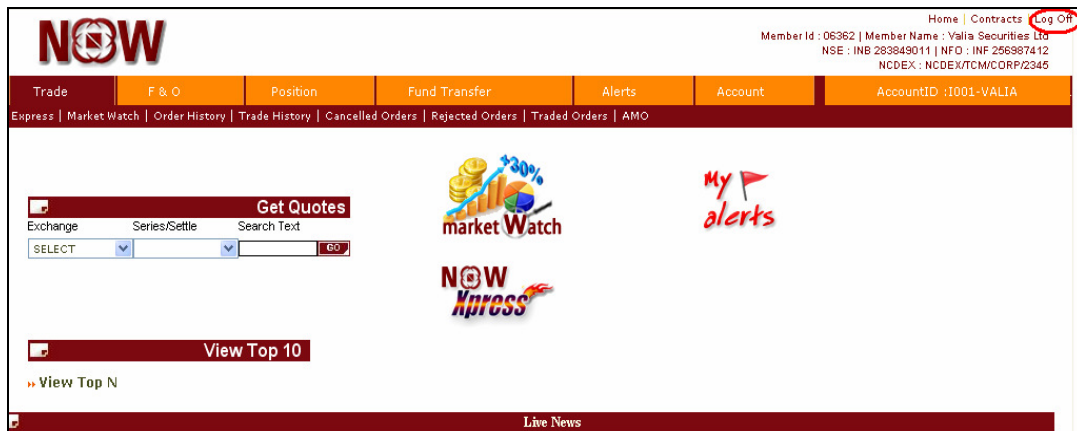
## 28 SSL Certificate

- All critical parts of the web site are SSL (Secure Socket Layer) enabled and all interaction is fully encrypted. This enables all your transaction to be safe and secure from any transcription.



## 29 Logout

- You can exit from NOW system by clicking on 'Logoff'.



**BLANK PAGE**